



## Are you awake?

Draw two animals that are awake during the day.

Draw two animals that are asleep during the day.

What is the name for animals that sleep during the day  
and are awake at night? \_ \_ \_ \_ \_

# Who do these ears belong to?



Draw the correct ears on the animal below.

Fox



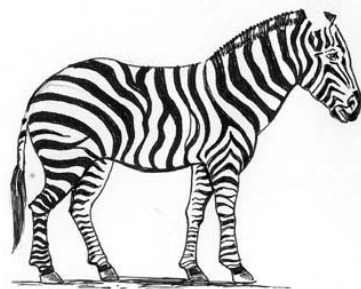
Rabbit



Lion



Zebra



# Wildlife Food

## Observation and record sheet

Write the animals name beside the food it eats.

Food	Animal Name
Grass	
Grass, leaves and shrubs	
Flowers, fruits, seeds and nuts	
Other Animals	
Dead Animals	

If you had to choose which animal would you like to be? Why?

.....  
.....

# Animal's favourite food.

Use your computer to display your findings as a graph,

OR.....plot your results on the graph below.

## Animals favourite food

Number  
of  
animals

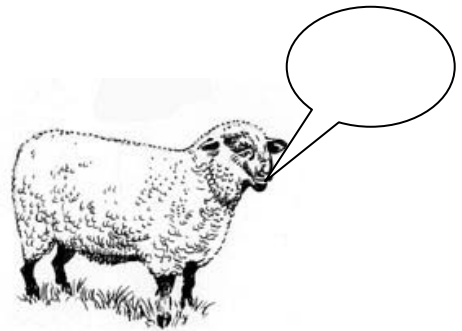
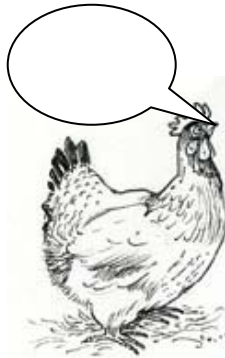
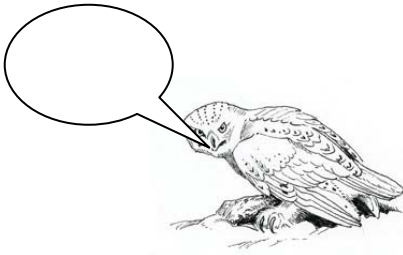
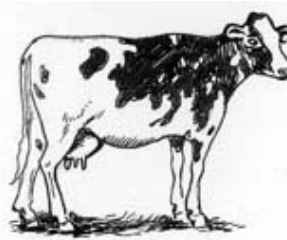
Grass    Grass, leaves    Flowers, fruits,    Other animals    Dead animals  
          and shrubs.    seeds and nuts.

Type of food eaten.

# Animal Sounds

Place the correct sound or sounds in the animal speech by choosing from the words listed.

Baa, Moo, Growl, Roar, Oink, Squeal, Cluck and Neigh



# Teeth

Draw the different types of teeth for each animal in the boxes provided.

Tiger or Shark (CARNIVORE)

Zebra or Giraffe (HERBIVORE)

Owl or Eagle (SCAVENGER)

Human (OMNIVORE)

Discuss how different teeth affect the type of food each animal eats.